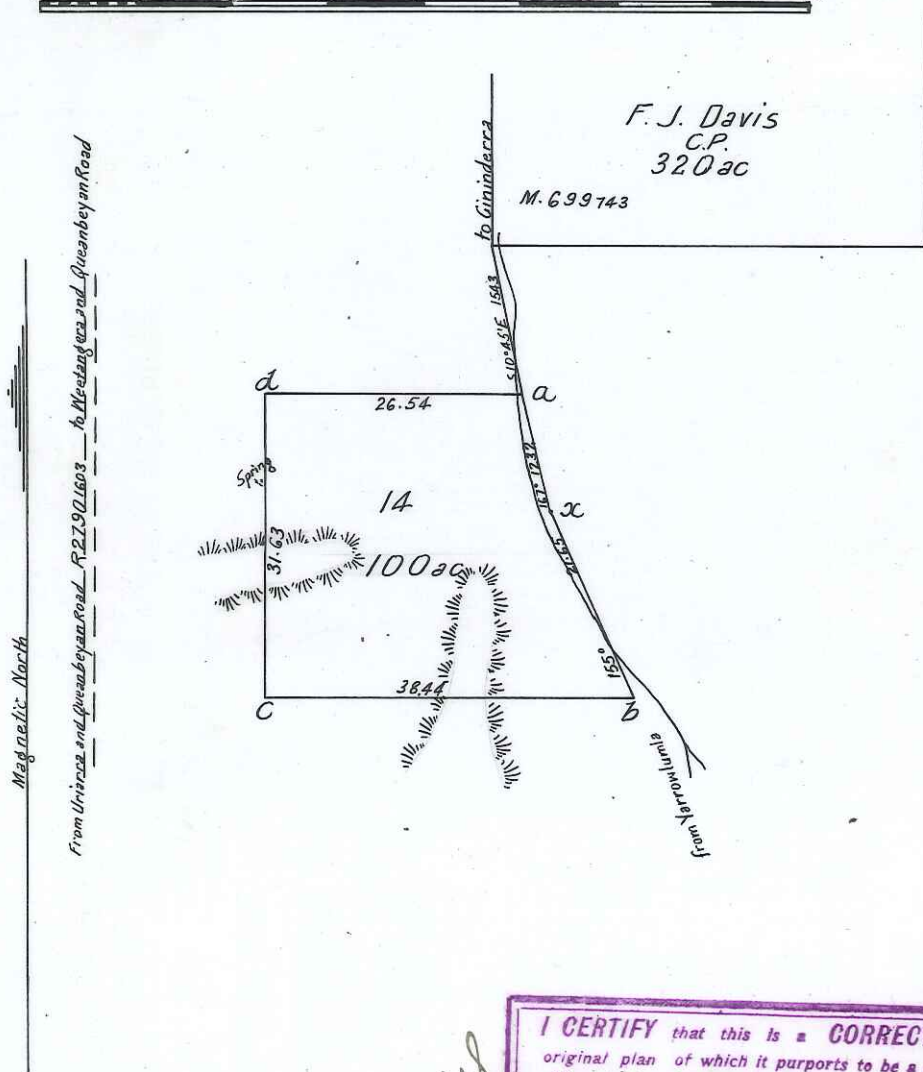


Plan of a portion of land N^o 14 containing 100 ac in the
 COUNTY OF MURRAY PARISH OF WEETANGERA
 Applied for as a Conditional Purchase by Richard Shumack
 under 21st to 31st clauses of the Crown Lands Regulations of 1861

C.P. 65. 216. 16th Feb Richard Shumack. Forfeited vide Gazette 4th July 1902
 Forfeiture Absolutely Reversed vide Gazette 22nd August 1906

Scale 20 Chains to 1 inch



I CERTIFY that this is a CORRECT COPY of the original plan of which it purports to be a copy. I being the officer having the custody thereof.
Ernest Nautus Draftsman-in-Charge
 4.5.11 Compiling Division-Lands Dept.

Corner	Bearing	From	Links	N ^o on tree
a	90°	Apple	.18	14
b	20° 30'	Gum	.17	14
c	199° 30'	Stump	.28	14
d	207°	Apple	.05	14
x	54°	Gum	.12	R

14

Notes
 Surveyed by Circumferenter
 Aspect. Open forest
 Water. None on Surface
 Marked in accordance with Regulations

Transmitted to the Surveyor General with my letter N^o 65.104 of the 30th Oct^r
 J. B. Thompson
 Licensed Surveyor

Acct 65. 2685
 F.W.R.
 8.11.66
 Sep

C.W Ex d 466

M. 860 143