

Plan of a portion of land containing 40 acres numbered 24, in the Parish of Gininderra, in the Country of Murray, applied for as A Conditional Purchase by William Davis under the 13th Section of the Crown Lands Alienation Act.

Mag. North

Reference to Corners.

Corner	Bearing from	Links	No on Tree
a	328° 30'	Dead	037 24
b	270° 0'	Gum	063 24
c	275° 0'	Gum	028 24
d	137° 30'	Gum	020 24

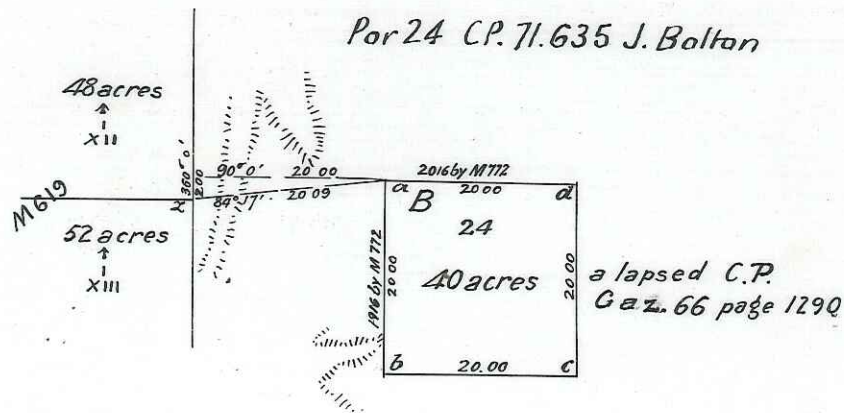
Corner trees marked thus $\left\{ \begin{array}{l} \uparrow \\ 4 \\ 24 \end{array} \right.$

Sale at Queanbeyan on 6th May 1867.
Country lot B

Portion $\frac{4}{24}$

Vide Aⁿ 67/5374 above lot not bid for

Por 24 C.P. 71.635 J. Bolton

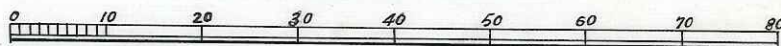


Notes

Surveyed by Circumferentor
Scale Twenty Chains to one Inch.
Formation Granite
Aspect Open forest
Timber Gum, Apple and Box
Water Supply None
Corner 2 Pegs found
Marked in accordance with Printed Regulations

I CERTIFY that this is a CORRECT COPY of the original plan of which it purports to be a copy. I being the officer having the custody thereof.
Ernest H. Austin Draftsman-in-Charge
27. 4. 71. Compiling Division-Lands Dept.

Scale of Chains



Transmitted to the Surveyor General with my letter N^o 65/10 dated 31st March.

J. B. Thompson
Lic. Surveyor

M. 822 743

24

Ed
4/8/67.