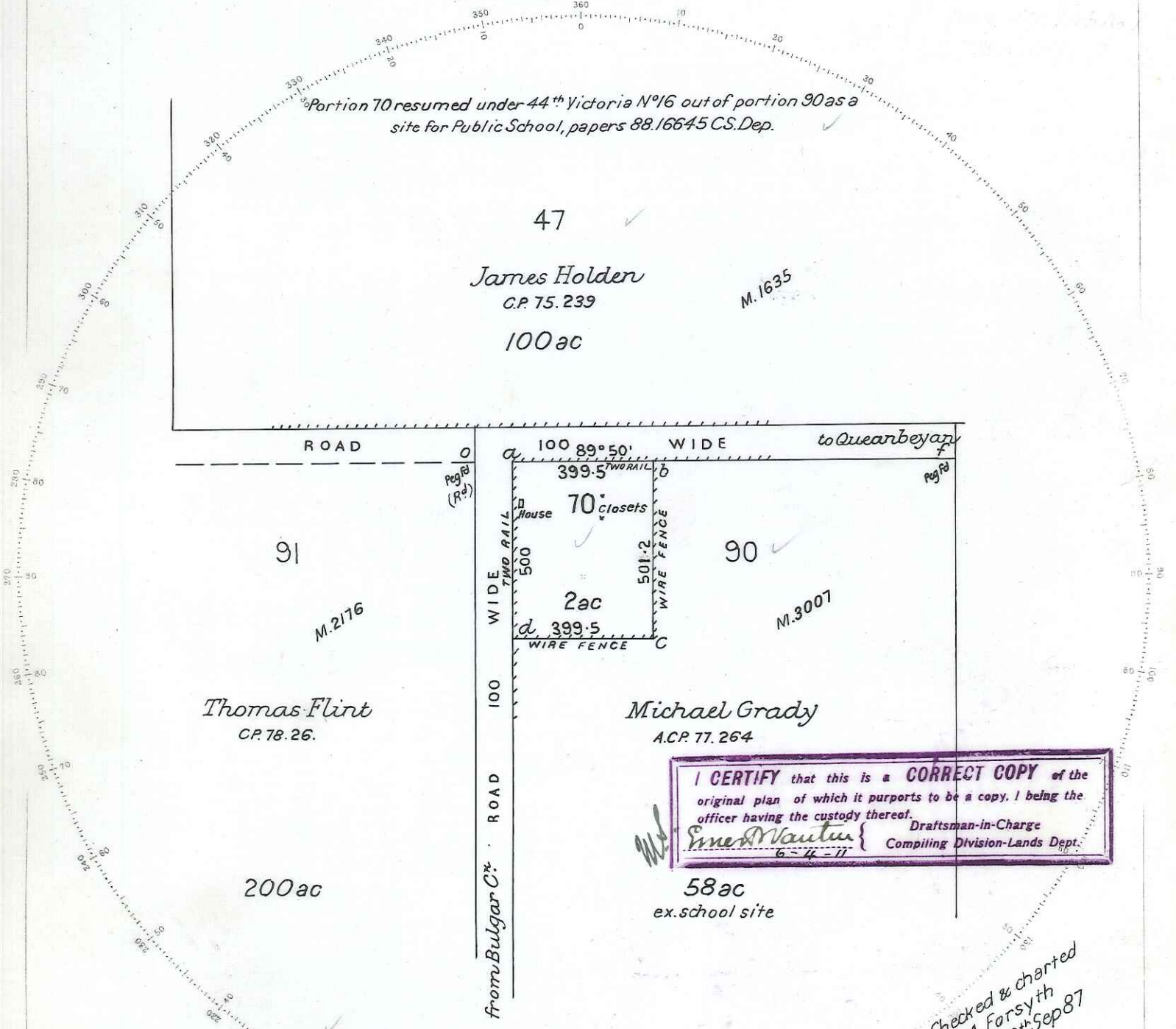


This plan cancels part of par. 90. M.3007

PLAN

of Portion 70
Parish of Yarrolumla
County of Murray

Applied for under the clause of the Crown Lands Alienation Act of 1884
by The Department of Education



Portion 70 resumed under 44th Victoria N^o16 out of portion 90 as a site for Public School, papers 88.16645 CS.Dep.

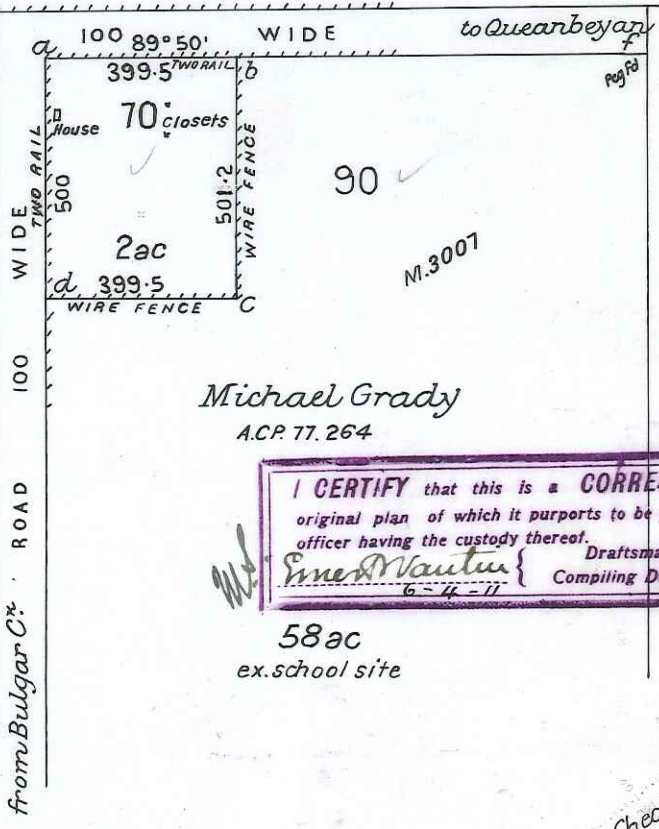
47
James Holden
C.P. 75.239
100 ac

M.1635

91
M.2176

Thomas Flint
C.P. 78.26.

200 ac



Michael Grady
A.C.P. 77.264

I CERTIFY that this is a CORRECT COPY of the original plan of which it purports to be a copy, I being the officer having the custody thereof.

Ernest Vautour
6-14-17

Draftsman-in-Charge
Compiling Division-Lands Dept.

58 ac
ex. school site

Value of Improvements School £40, Closets £4, fencing £12
Azimuth taken from of.

Checked & charted
A. Forsyth
12th Sep 87

Examined
6th Oct 87
H. Hare

Plan approved
A.C. Betts
Dist. Sur.
10th Nov. 87

Scale 4 Chains to an Inch.

Reference to Corners

Corner	Bearing	From	Links	N ^o on Tree
a	Post at corner			70
b	Post at corner			70 90
c	South Post	2		70 90
d	South Post	1/2		70 90

70

Reference to Traverse

Line	Bearing	Distance

Staff Surveyor

I hereby certify that I in person made and on the 8th July 1887 completed the survey represented on this plan on which are written the bearings and lengths of the lines measured by me and I declare that the survey has been executed in accordance with the regulations published for the guidance of licensed Surveyors and the practice of the Surveyor Generals Department

EX-100